

13. April 2015

Fuel Injection Systems and Parts

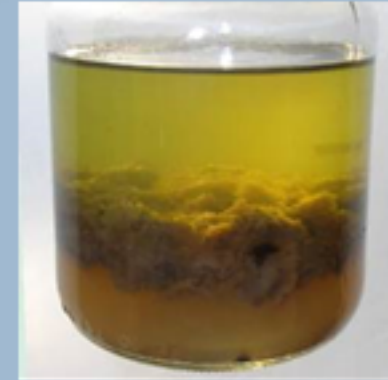
Microbial growth set to increase with lower sulfur / fuels

Lower sulfur content in fuel:

Effect: less lubrication tendency
Blockage of rotating or moved parts in the engine
Use of more lubrication oil
Instead of only fuel
Danger for the engine

Add of Biomass to the normal fuel:

Effect: corrosion of parts because of FAME (fatty-acid-methyl-ester)
Fermentation of biomass when not constantly shaken.
Above emulsion (microbes grow with water content in fuel) is damaging the whole engine
Pipes, injection systems (pumps and injectors) must be – at high cost – cleaned and removed



DUAP, since more than ten years, is concerned by these problems and developed in house new procedures to protect moving surfaces from corrosion and blockage.

Please ask for DUATOP injectors, control valves, pump elements and nozzles in special execution.

Together with the company EFI HIGHTECH AG
Weidstrasse 4a
CH-9410 Heiden
Phone/Fax +41 71 890 08 75

An electronically controlled fuel regeneration system named EFICLEAN extracts of fuel all the hard stuffs, down to 4 μ , and all the waters (condense and others).

Regards,

Dr. H.O. Geisser, VRD
DUAP AG, Switzerland